



**airWAVE**  
Airway Monitoring System

# Instruction for Use - AirWave™ Monitor Mounting Bracket



June 2013 Edition

The foundation of airway management has just changed...  
at the speed of sound.

• *AirWave Monitor Mounting Bracket Instruction for Use*

• **A. System Description**

SonarMed's Monitor Mounting Bracket allows the SonarMed Monitor to be securely mounted to either a round pole (diameter 0.75" – 1.5") such as an IV pole, or a rectangular rail (10 x 25 mm).

**B. Package Contents**

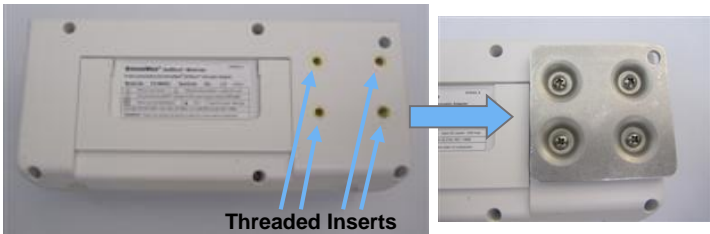
- (1) Adapter Plate
- (1) Plunger Plate w/ clamp
- (4) 8-32 x 5/16" Pan Head Screws
- (2) Nylon Thumb Screws

**C. Tools Required (Not Included)**

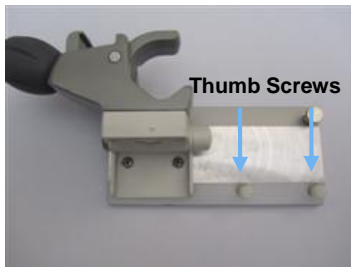
#2 Phillips Head Screwdriver

**D. Initial Assembly**

1. Attach the adapter plate to the AirWave Monitor by inserting the 8-32 x 5/16" screws into the threaded inserts in the rear of the monitor enclosure.



2. Insert the two nylon thumbscrews into the plunger plate.

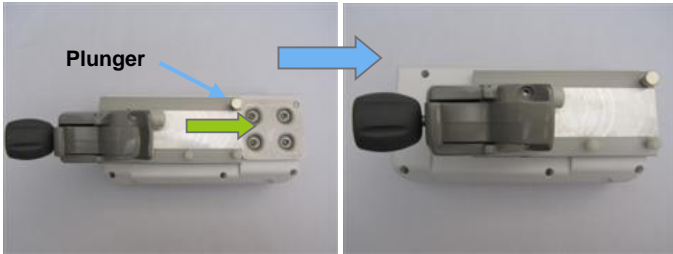


**Note:** Take care not to strip the threads on the nylon screws.



## E. Mounting the Monitor

1. To attach the plunger plate with the clamp to the Monitor, pull out the spring-loaded plunger and slide the plunger plate over the adapter plate. Once the plunger lines up with the hole in the adapter plate, allow the plunger to engage. Tighten the thumb screws.

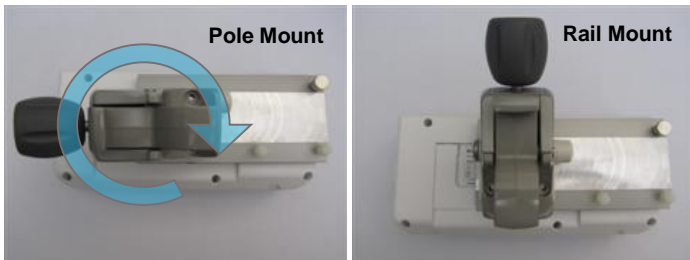


2. Loosen the large gray knob until the clamp can slide onto the pole or rail to which the Monitor is to be attached. Once in place, tighten the knob to securely mount the Monitor.

**WARNING:** When attaching to a rectangular rail, ensure that the clamp's gray knob is facing upward. This allows the clamp to securely grip the top edge of the rail when tightened. Not following this instruction may result in the Monitor falling from the rail.

## F. Adjusting the Bracket

1. To switch the bracket from a vertical (pole mount) to a horizontal (rail mount) orientation, hold the plunger plate and rotate the clamp using the built-in swivel mechanism.



## AirWave Monitor Mounting Bracket Instruction for Use

2. The clamp may be tilted upward to provide an optimal viewing angle of the Monitor screen.



For a setup where it is desired to instead tilt the Monitor downward, remove the screws shown below, rotate the clamp 180°, and screw the clamp back down onto the plunger plate.



## G. Removing the Bracket

1. To remove the bracket from the Monitor, loosen the thumb screws, pull out the spring-loaded plunger, and slide the monitor out of the plunger plate.
2. The adapter plate does not interfere with use of the Monitor in other configurations (i.e. using the kickstand or the hanging strap), and it is therefore recommended to leave the adapter plate in place even when the bracket is not being used.

## H. Contact Information

### **SonarMed, Inc.**

12220 N. Meridian Street,  
Suite 150  
Carmel, IN 46032  
USA

Phone: (855) 240-0553

Fax: (866) 853-3684

support@sonarmed.com

www.sonarmed.com